

Parts List

8109.282 Salvador 1~, 3~



Table of Contents

Introduction	2
Specially approved products.....	2
Product Description	3
Products included.....	3
The data plate.....	3
Exploded View	4
8109.282.....	4
Spare Parts	5
8109.282.....	5

Introduction

Purpose of this manual

The purpose of this manual is to provide necessary information on spare parts and accessories order.

Disclaimer

Always use genuine Grindex parts. The use of other spare parts or accessories can invalidate any claims for warranty or compensation. Grindex does not take any responsibility for damages that are caused by the use of non-original parts. For more information, contact your local sales and service representative.

Data for ordering spare parts

The following information is needed for spare part orders:

- Serial number of the product
- Part number
- Quantity of bulk material, see * in tables

Specially approved products

Qualification of personnel

Only Grindex or Grindex-authorized service personnel may undertake repair work on Ex-approved products.

Dimensional accuracy inspection

Spare parts marked with (Ex) after the part number are subject to dimensional accuracy inspection when used in specially approved products.

Product Description

Products included

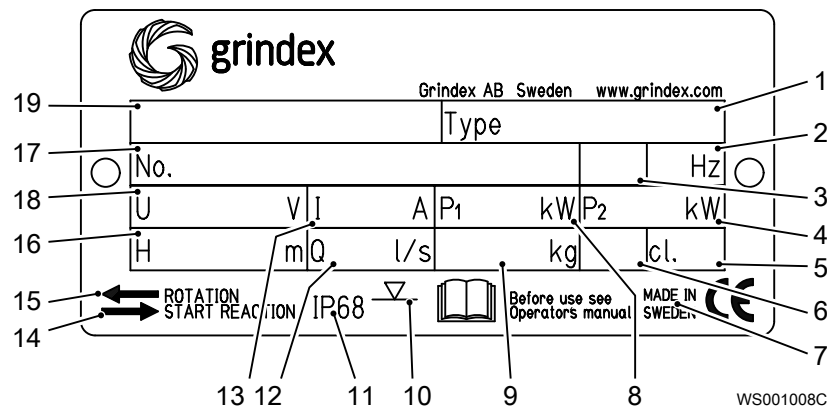
Pump model	Standard	EX	MSHA	Drainage	Sludge
Salvador 8109.282	X				X

The data plate

Introduction

The data plate is a metal label located on the main body of the pump. The data plate lists key product specifications.

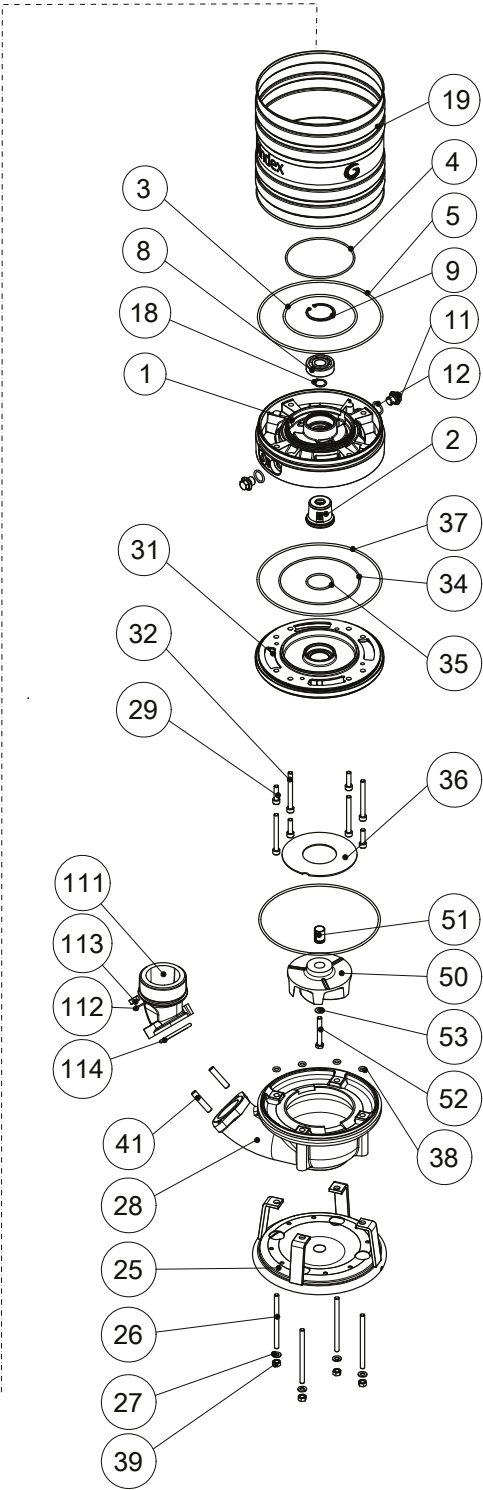
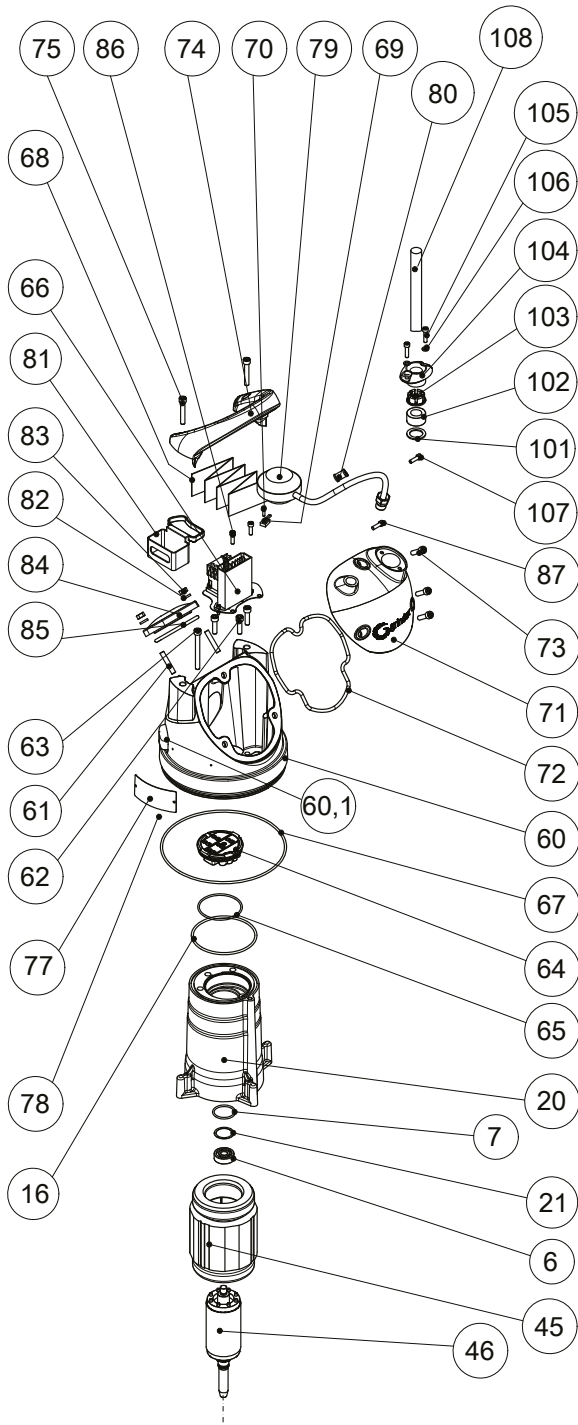
The data plate

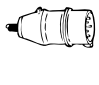
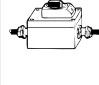

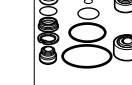


1. Pump type number
2. Frequency
3. Phases, type of current
4. Rated shaft power
5. Thermal class
6. Locked rotor code-letter
7. Country of origin
8. Maximum power consumption
9. Product weight
10. Maximum submersion depth
11. Degree of protection
12. Maximum capacity
13. Rated current
14. Direction of the start reaction
15. Direction of the impeller rotation
16. Maximum head
17. Serial number
18. Rated voltage
19. Pump model

Exploded View

8109.282



PLUG CONTACT	PHASE SHIFTER	O-RING KIT	BASIC REPAIR KIT
			
90	92	800	900

20128C_8109_282_expl_view

Spare Parts

8109.282

Pos. No	Part. No	Denomination	Qty/Version
			282
1	51 708 00	Intermediate piece	1
2	51 728 50	Mechanical seal	1
3	410 020	O-ring 127.0X4.0 NBR	1
4	50 037 01	O-ring 119.5X3 NBR	1
5	410 161	O-ring 215.0X4.0 NBR	1
6	50 287 03	Ball bearing 12X37X12 MM	1
7	50 037 63	O-ring 36.2X3.0 FPM	1
8	50 287 04	Ball bearing 20X52X15 MM	1
9	410 834	Retaining ring	1
11	133 063	Inspection screw	2
12	133 064	O-ring 19.2X3 NBR	2
14	410 053	Oil ISO VG 32	*
16	50 772 84	O-ring 114X4.0 NBR	1
17	50 992 00	Sticker CUT HAZARD	1
18	50 278 02	Retaining ring SGA 20	1
19	51 720 00	Outer casing	1
20	51 681 00	Stator housing	1
21	410 904	Spring washer	1
23	50 136 00	Instruction label	1
25	132 740	Stand	1
26	410 919	Stud	4
27	50 021 38	Plain washer 8-A4-170HV	4
28	50 065 01	Pump housing	1
29	140 050	Hex.socket hd screw M8X30-A2-70	4
31	51 710 00	Seal housing cover	1
32	410 830	Hex.socket hd screw M8X80-A2-70	4
34	410 833	O-ring 139.5X3 NBR	1
35	50 037 61	O-ring 44.2X3 NBR	1
36	51 091 00	Guide plate	1
37	410 161	O-ring 215.0X4.0 NBR	2
38	50 037 18	O-ring 8X3 NBR	4
39	50 021 37	Hexagon nut M8-A4-70	4
41	410 169	Stud 10X35-A2-70	2

Pos. No	Part. No	Denomination	Qty/Version
			282
44	410 057	Insulating hose D=14 MM	*
44	410 770	Insulating hose D=18 MM	*
45	50 912 00	Stator 13-10-2b	1
		6-leads 3-phase 50 Hz 2-poles 380V-400V Y	
		6-leads 3-phase 60 Hz 2-poles 440V-480V Y	
		6-leads 3-phase 50 Hz 2-poles 220V-240V D	
45	50 912 03	Stator 13-10-2b	1
		6-leads 3-phase 60 Hz 2-poles 380V-400V Y	
		6-leads 3-phase 60 Hz 2-poles 220V-240V D	
45	50 912 02	Stator 13-10-2b	1
		9-leads 3-phase 60 Hz 2-poles 220V-240V Y//	
		9-leads 3-phase 60 Hz 2-poles 440V-480V YSER	
45	50 912 16	Stator 13-10-2b	1
		12-leads 3-phase 60 Hz 2-poles 440V-460V DSER	
		12-leads 3-phase 60 Hz 2-poles 380V-400V Y//	
		12-leads 3-phase 60 Hz 2-poles 220V-230V D//	
45	50 912 18	Stator 13-10-2b	1
		3-leads 3-phase 50 Hz 2-poles 380V-400V Y	
		3-leads 3-phase 60 Hz 2-poles 440V-480V Y	
45	50 912 04	Stator 13-10-2b	1
		6-leads 3-phase 50 Hz 2-poles 415V-440V Y	
45	50 912 17	Stator 13-10-2b	1
		3-leads 3-phase 50 Hz 2-poles 500V Y	
		3-leads 3-phase 60 Hz 2-poles 575V-600V Y	
		3-leads 3-phase 50 Hz 2-poles 525V-550V Y	
45	50 913 00	Stator 13-10-2b	1
		4-leads 1-phase 50 Hz 2-poles 220V-240V	
45	50 913 02	Stator 13-10-2b	1
		4-leads 1-phase 60 Hz 2-poles 220V-240V	
46	51 724 00	Shaft unit	1
50	51 092 10	Impeller	1
		N 50Hz 1-phase Max ambient temp=40 DC	
50	51 700 00	Impeller	1
		N 50Hz 3-phase Max ambient temp=40 DC	
50	51 700 02	Impeller	1
		N 60Hz 1-phase Max ambient temp=40 DC	
50	51 700 01	Impeller	1
		N 60Hz 3-phase Max ambient temp=40 DC	
51	51 721 00	Sleeve unit	1

Pos. No	Part. No	Denomination	Qty/Version
			282
52	410 006	Hexagon head screw M8X60-A4-80	1
53	50 021 38	Plain washer 8-A4-170HV	1
60	51 783 00	Cover	1
60,1	50 869 00	Air release valve	1
60,2	-	Main cover	1
61	410 689	Stud M8X45-A2-70	2
62	140 050	Hex.socket hd screw M8X30-A2-70	3
63	410 830	Hex.socket hd screw M8X80-A2-70	1
64	51 711 01	Terminal plate unit	1-phase 3-phase
64,1	51 641 01	Terminal plate unit	1
64,2	51 713 05	Cable set	1
64	51 711 00	Terminal plate unit	3-phase
64,1	51 641 01	Terminal plate unit	1
64,2	51 713 05	Cable set	1
65	50 037 58	O-ring 74.5X3.0 NBR	1
66	51 712 33	Starter unit	Contacteur unit 50Hz 3- phase 220V - 240V Not CSA approved Contacteur unit 50Hz 3- phase 220V - 240V Float switch Not CSA approved
66,1	51 716 00	Holder	1
66,4	51 511 07	Motor protector SMART	1
66,5	410 111	Contacteur	1
66,6	410 008	Hex.socket hd screw M4X16-A2-70	2
66,7	410 012	Lock nut	2
66,8	410 008	Hex.socket hd screw M4X16-A2-70	2
66,9	410 012	Lock nut	2
66,12	51 713 02	Cable set	1
66,14	51 713 04	Cable set	1
66,16	51 713 06	Cable set	1
66,17	50 900 62	Single-core cable	1
66,18	50 509 00	Cable set	1

Pos. No	Part. No	Denomination	Qty/Version
			282
66	51 712 34	Starter unit	1
		Contactor unit 50Hz 3-phase 380V - 400V Not CSA approved	
		Contactor unit 50Hz 3-phase 380V - 400V Float switch Not CSA approved	
66,1	51 716 00	Holder	1
66,4	51 511 05	Motor protector SMART	1
66,5	410 109	Contactor	1
66,6	410 008	Hex.socket hd screw M4X16-A2-70	2
66,7	410 012	Lock nut	2
66,8	410 008	Hex.socket hd screw M4X16-A2-70	2
66,9	410 012	Lock nut	2
66,12	51 713 02	Cable set	1
66,14	51 713 04	Cable set	1
66,16	51 713 06	Cable set	1
66,17	50 900 62	Single-core cable	1
66,18	50 509 00	Cable set	1
66	51 712 35	Starter unit	1
		Contactor unit 50Hz 3-phase 415V - 440V Not CSA approved	
66,1	51 716 00	Holder	1
66,4	51 511 05	Motor protector SMART	1
66,5	410 163	Contactor	1
66,6	410 008	Hex.socket hd screw M4X16-A2-70	2
66,7	410 012	Lock nut	2
66,8	410 008	Hex.socket hd screw M4X16-A2-70	2
66,9	410 012	Lock nut	2
66,12	51 713 02	Cable set	1
66,14	51 713 04	Cable set	1
66,16	51 713 06	Cable set	1
66,17	50 900 62	Single-core cable	1
66,18	50 509 00	Cable set	1
66	51 712 36	Starter unit	1
		Contactor unit 50Hz 3-phase 500V - 500V Not CSA approved	
		Contactor unit 50Hz 3-phase 525V - 550V Not CSA approved	
66,1	51 716 00	Holder	1

Pos. No	Part. No	Denomination	Qty/Version
			282
66,4	51 511 05	Motor protector SMART	1
66,5	410 110	Contactor	1
66,6	410 008	Hex.socket hd screw M4X16-A2-70	2
66,7	410 012	Lock nut	2
66,8	410 008	Hex.socket hd screw M4X16-A2-70	2
66,9	410 012	Lock nut	2
66,12	51 713 02	Cable set	1
66,14	51 713 04	Cable set	1
66,16	51 713 06	Cable set	1
66,17	50 900 62	Single-core cable	1
66,18	50 509 00	Cable set	1
66	51 712 43	Starter unit	1
		Contactor unit 60Hz 3- phase 220V - 240V CSA approved	
		Contactor unit 60Hz 3- phase 220V - 240V Float switch CSA approved	
66,1	51 716 00	Holder	1
66,4	51 511 08	Motor protector SMART	1
66,5	410 111	Contactor	1
66,6	410 008	Hex.socket hd screw M4X16-A2-70	2
66,7	410 012	Lock nut	2
66,8	410 008	Hex.socket hd screw M4X16-A2-70	2
66,9	410 012	Lock nut	2
66,12	51 713 02	Cable set	1
66,14	51 713 04	Cable set	1
66,16	51 713 06	Cable set	1
66,17	50 900 62	Single-core cable	1
66,18	50 509 00	Cable set	1
66	51 712 44	Starter unit	1
		Contactor unit 60Hz 3- phase 380V - 400V Float switch Not CSA approved	
		Contactor unit 60Hz 3- phase 380V - 400V CSA approved	
66,1	51 716 00	Holder	1
66,4	51 511 06	Motor protector SMART	1
66,5	410 109	Contactor	1
66,6	410 008	Hex.socket hd screw M4X16-A2-70	2

Pos. No	Part. No	Denomination	Qty/Version
			282
66,7	410 012	Lock nut	2
66,8	410 008	Hex.socket hd screw M4X16-A2-70	2
66,9	410 012	Lock nut	2
66,12	51 713 02	Cable set	1
66,14	51 713 04	Cable set	1
66,16	51 713 06	Cable set	1
66,17	50 900 62	Single-core cable	1
66,18	50 509 00	Cable set	1
66	51 712 45	Starter unit	1
		Contactor unit 60Hz 3- phase 440V - 480V CSA approved	
66,1	51 716 00	Holder	1
66,4	51 511 06	Motor protector SMART	1
66,5	410 163	Contactor	1
66,6	410 008	Hex.socket hd screw M4X16-A2-70	2
66,7	410 012	Lock nut	2
66,8	410 008	Hex.socket hd screw M4X16-A2-70	2
66,9	410 012	Lock nut	2
66,12	51 713 02	Cable set	1
66,14	51 713 04	Cable set	1
66,16	51 713 06	Cable set	1
66,17	50 900 62	Single-core cable	1
66,18	50 509 00	Cable set	1
66	51 712 47	Starter unit	1
		Contactor unit 60Hz 3- phase 575V - 600V CSA approved	
66,1	51 716 00	Holder	1
66,4	51 511 06	Motor protector SMART	1
66,5	410 902	Contactor	1
66,6	410 008	Hex.socket hd screw M4X16-A2-70	2
66,7	410 012	Lock nut	2
66,8	410 008	Hex.socket hd screw M4X16-A2-70	2
66,9	410 012	Lock nut	2
66,12	51 713 02	Cable set	1
66,14	51 713 04	Cable set	1
66,16	51 713 06	Cable set	1
66,17	50 900 62	Single-core cable	1

Pos. No	Part. No	Denomination	Qty/Version
			282
66,18	50 509 00	Cable set	1
66	51 712 38	Starter unit Contactor unit 50Hz 3-phase 380V - 400V Float switch with isolated input Not CSA approved	1
66,1	51 716 00	Holder	1
66,4	51 511 05	Motor protector SMART	1
66,5	410 109	Contactor	1
66,6	410 008	Hex.socket hd screw M4X16-A2-70	2
66,7	410 012	Lock nut	2
66,8	410 008	Hex.socket hd screw M4X16-A2-70	2
66,9	410 012	Lock nut	2
66,14	51 713 04	Cable set	1
66,16	51 713 06	Cable set	1
66,17	50 900 62	Single-core cable	1
66,18	50 509 00	Cable set	1
66,20	51 779 00	Supervision relay	1
66,21	50 457 00	Cable tie	1
66,22	410 034	Closed-end splice 3-6(AWG 12-10) L=18	1
66	51 712 39	Starter unit Contactor unit 50Hz 3-phase 415V - 440V Float switch with isolated input Not CSA approved	1
66,1	51 716 00	Holder	1
66,4	51 511 05	Motor protector SMART	1
66,5	410 163	Contactor	1
66,6	410 008	Hex.socket hd screw M4X16-A2-70	2
66,7	410 012	Lock nut	2
66,8	410 008	Hex.socket hd screw M4X16-A2-70	2
66,9	410 012	Lock nut	2
66,14	51 713 04	Cable set	1
66,16	51 713 06	Cable set	1
66,17	50 900 62	Single-core cable	1
66,18	50 509 00	Cable set	1
66,20	51 779 00	Supervision relay	1
66,21	50 457 00	Cable tie	1
66,22	410 034	Closed-end splice 3-6(AWG 12-10) L=18	1

Pos. No	Part. No	Denomination	Qty/Version
			282
66	51 712 40	Starter unit Contactor unit 50Hz 3-phase 525V - 550V Float switch with isolated input Not CSA approved Contactor unit 50Hz 3-phase 500V - 500V Float switch with isolated input Not CSA approved	1
66,1	51 716 00	Holder	1
66,4	51 511 05	Motor protector SMART	1
66,5	410 902	Contactor	1
66,6	410 008	Hex.socket hd screw M4X16-A2-70	2
66,7	410 012	Lock nut	2
66,8	410 008	Hex.socket hd screw M4X16-A2-70	2
66,9	410 012	Lock nut	2
66,14	51 713 04	Cable set	1
66,16	51 713 06	Cable set	1
66,17	50 900 62	Single-core cable	1
66,18	50 509 00	Cable set	1
66,20	51 779 00	Supervision relay	1
66,21	50 457 00	Cable tie	1
66,22	410 034	Closed-end splice 3-6(AWG 12-10) L=18	1
66	51 712 49	Starter unit Contactor unit 60Hz 3-phase 440V - 480V Float switch with isolated input CSA approved	1
66,1	51 716 00	Holder	1
66,4	51 511 06	Motor protector SMART	1
66,5	410 163	Contactor	1
66,6	410 008	Hex.socket hd screw M4X16-A2-70	2
66,7	410 012	Lock nut	2
66,8	410 008	Hex.socket hd screw M4X16-A2-70	2
66,9	410 012	Lock nut	2
66,14	51 713 04	Cable set	1
66,16	51 713 06	Cable set	1
66,17	50 900 62	Single-core cable	1
66,18	50 509 00	Cable set	1
66,20	51 779 00	Supervision relay	1
66,21	50 457 00	Cable tie	1

Pos. No	Part. No	Denomination	Qty/Version
			282
66,22	410 034	Closed-end splice 3-6(AWG 12-10) L=18	1
66	51 712 50	Starter unit Contactor unit 60Hz 3-phase 575V - 600V Float switch with isolated input CSA approved	1
66,1	51 716 00	Holder	1
66,4	51 511 06	Motor protector SMART	1
66,5	410 902	Contactor	1
66,6	410 008	Hex.socket hd screw M4X16-A2-70	2
66,7	410 012	Lock nut	2
66,8	410 008	Hex.socket hd screw M4X16-A2-70	2
66,9	410 012	Lock nut	2
66,14	51 713 04	Cable set	1
66,16	51 713 06	Cable set	1
66,17	50 900 62	Single-core cable	1
66,18	50 509 00	Cable set	1
66,20	51 779 00	Supervision relay	1
66,21	50 457 00	Cable tie	1
66,22	410 034	Closed-end splice 3-6(AWG 12-10) L=18	1
66	51 712 02	Starter unit Capacitor unit 50Hz 1-phase 220V - 240V 1-phase Not CSA approved Capacitor unit 60Hz 1-phase 220V - 240V 1-phase Float switch CSA approved Capacitor unit 50Hz 1-phase 220V - 240V 1-phase Float switch Not CSA approved Capacitor unit 60Hz 1-phase 220V - 240V 1-phase CSA approved	1
66,1	51 716 00	Holder	1
66,2	51 830 00	Capacitor	1
66,3	410 376	Capacitor 20MF 400V	1
66,4	50 906 02	Start relay SNT	1
66,6	410 008	Hex.socket hd screw M4X16-A2-70	2
66,7	410 012	Lock nut	2
66,10	51 004 00	Cable set	1
66,11	51 713 01	Cable set	1

Pos. No	Part. No	Denomination	Qty/Version
			282
66,12	51 713 02	Cable set	1
66,19	50 021 36	Lock nut M8-A4-70	2
67	410 161	O-ring 215.0X4.0 NBR	1
68	51 671 00	Connection plate	1
69	51 725 00	Thermal detector unit	1
70	410 008	Hex.socket hd screw M4X16-A2-70	1
71	51 687 00	Cover	1
71	51 687 01	Cover	1
72	51 723 00	Gasket	1
73	140 050	Hex.socket hd screw M8X30-A2-70	3
74	51 691 00	Handle	1
75	50 771 32	Hex.socket hd screw M8X50-A2-70	2
77	50 888 00	Plate-blank	1
78	410 000	Drive screw 4X5-A2/A4	4
78	410 000	Drive screw 4X5-A2/A4	2
79	51 726 03	Level regulator unit EU	1
79	51 726 04	Level regulator unit EU	1

Pos. No	Part. No	Denomination	Qty/Version
			282
79	51 726 05	Level regulator unit US/CDN	1
		Contactor unit 60Hz 3- phase 575V - 600V Float switch with isolated input CSA approved	
		Capacitor unit 60Hz 1- phase 220V - 240V 1-phase Float switch CSA approved	
		Contactor unit 60Hz 3- phase 440V - 480V Float switch with isolated input CSA approved	
		Contactor unit 60Hz 3- phase 220V - 240V Float switch CSA approved	
80	410 077	Cable clamp STAINLESS STEEL, CR	1
82	410 014	Plain washer A2-170HV M8	2
83	50 021 37	Hexagon nut M8-A4-70	2
84	50 884 00	Cover	1
85	410 015	O-ring 79.2X5.7-NBR	1
86	50 020 00	Hex.socket hd screw M6X20-A2-70	2
87	50 020 00	Hex.socket hd screw M6X20-A2-70	1
88	51 800 00	Sticker	1
90	50 100 00	Plug contact	1
		3-phase 50 Hz 380V - 415V Current range: 0 - 16A Plug combined with short cable: No cable Supply connection: CEE 5-PLUG 16A	
		Starter (Phase shifter) 3- phase 50/60 Hz 380V - 415V Current range: 0 - 16A Plug combined with short cable: SUBCAB 4G1,5 Supply connection: CEE 5- PLUG 16A	
90	410 684	Plug contact	1
		3-phase 50 Hz 380V - 415V Current range: 0 - 16A Plug combined with short cable: No cable Supply connection: CEE 4-PLUG 16A	
90	410 038	Plug contact	1
		1-phase 60 Hz 0V - 250V Current range: 0 - 15A Plug combined with short cable: No cable Supply connection: Plug NEMA 6-15 15A 250V	

Pos. No	Part. No	Denomination	Qty/Version	
			282	
90	410 042	Plug contact	1-phase 50 Hz 220V - 240V Current range: 0 - 16A Plug combined with short cable: No cable Supply connection: CEE 3-PLUG 16A	1
90	410 035	Plug contact	1-phase 50 Hz 0V - 250V Current range: 0 - 10A Plug combined with short cable: No cable Supply connection: Plug T12 SEV1011 L+N+PE, 250 V 10 A	1
91	131 040	Motor cable subcab	Starter (Phase shifter) 3- phase 50/60 Hz 380V - 415V Current range: 0 - 16A Plug combined with short cable: SUBCAB 4G1,5 Supply connection: CEE 5- PLUG 16A Starter (Phase shifter) 3- phase 50/60 Hz 220V - 575V Current range: 0 - 16A Plug combined with short cable: SUBCAB 4G1,5	*
91	410 065	Motor cable subcab	Starter (Phase shifter) 3- phase 50/60 Hz 220V - 575V Current range: 0 - 16A Plug combined with short cable: SUBCAB 14AWG/4	*
92	50 102 00	Phase shifter		1
93	51 735 00	Sticker		1
94	51 735 01	Sticker		1
94	51 735 01	Sticker		2
100	410 056	Insulating hose D=14 MM		*
101	50 127 04	Plain washer (10)-22 MM		1
102	410 727	Seal sleeve (10)-12 MM	SUBCAB 3G1,5 10 - 11mm Max 750V SUBCAB 4G1,5 10,50 - 11,50mm Max 750V SUBCAB 3G1,5 10 - 11mm Supply connection: Plug 532.1U Max 250V SUBCAB 3G2,5 11 - 12mm Max 750V	1
102	410 729	Seal sleeve (14)-16 MM	Screened 3x1,5 13,50 - 14,90mm Max 1000V SUBCAB 4G1,5+2x1,5 16 - 17mm Max 750V SUBCAB 14AWG/4 14,20 - 15,20mm Max 600V	1

Pos. No	Part. No	Denomination	Qty/Version	
			282	
102	410 728	Seal sleeve (12)-14 MM	SUBCAB 14AWG/3 13,20 - 14,20mm Max 600V Screened 3x1,5 13,50 - 14,90mm Max 1000V SUBCAB 4G2,5 12,50 - 13,50mm Max 750V	1
102	410 730	Seal sleeve (16)-18 MM	SUBCAB 12AWG/4 17 - 18mm Max 600V	1
102	410 731	Seal sleeve (18)-20 MM	SUBCAB S3x2,5+3x2,5/3+S(4x0,5) 18 - 20mm Max 1000V	1
103	50 926 00	Cable clip (10)-12 MM	SUBCAB 3G1,5 10 - 11mm Max 750V SUBCAB 4G1,5 10,50 - 11,50mm Max 750V SUBCAB 3G1,5 10 - 11mm Supply connection: Plug 532.1U Max 250V SUBCAB 3G2,5 11 - 12mm Max 750V	1
103	50 926 02	Cable clip (14)-16 MM	Screened 3x1,5 13,50 - 14,90mm Max 1000V SUBCAB 4G1,5+2x1,5 16 - 17mm Max 750V SUBCAB 14AWG/4 14,20 - 15,20mm Max 600V	1
103	50 926 01	Cable clip (12)-14 MM	SUBCAB 14AWG/3 13,20 - 14,20mm Max 600V Screened 3x1,5 13,50 - 14,90mm Max 1000V SUBCAB 4G2,5 12,50 - 13,50mm Max 750V	1
103	50 926 03	Cable clip (16)-18 MM	SUBCAB 12AWG/4 17 - 18mm Max 600V	1
103	50 926 04	Cable clip (18)-20 MM	SUBCAB S3x2,5+3x2,5/3+S(4x0,5) 18 - 20mm Max 1000V	1
104	50 932 00	Entrance flange		1
105	131 310	Hex.socket hd screw M6X25-A4-70		2
106	410 013	Plain washer 6-A4-170		2
107	50 020 00	Hex.socket hd screw M6X20-A2-70		1
107	50 020 00	Hex.socket hd screw M6X20-A2-70		2
108	51 714 01	Motor cable unit	SUBCAB 3G1,5 10 - 11mm L= 20m Supply connection: Plug 532.1U Max 250V	1

Pos. No	Part. No	Denomination		Qty/Version
				282
108	51 714 02	Motor cable unit	SUBCAB 3G1,5 10 - 11mm L= 20m Max 750V	1
108	51 714 05	Motor cable unit	SUBCAB 4G1,5 10,50 - 11,50mm L= 20m Max 750V	1
108	51 714 10	Motor cable unit	SUBCAB 4G1,5+2x1,5 16 - 17mm L= 20m Max 750V	1
108	51 714 06	Motor cable unit	SUBCAB 4G2,5 12,50 - 13,50mm L= 20m Max 750V	1
108	51 714 03	Motor cable unit	SUBCAB 3G2,5 11 - 12mm L= 20m Max 750V	1
108	51 714 04	Motor cable unit	SUBCAB 14AWG/3 13,20 - 14,20mm L= 16m Max 600V	1
108	51 714 07	Motor cable unit	SUBCAB 14AWG/4 14,20 - 15,20mm L= 16m Max 600V	1
108	51 714 08	Motor cable unit	SUBCAB 12AWG/4 17 - 18mm L= 16m Max 600V	1
108	51 714 09	Motor cable unit	Screened 3x1,5 13,50 - 14,90mm L= 20m Max 1000V	1
108	51 714 19	Motor cable unit	SUBCAB S3x2,5+3x2,5/3+S(4x0,5) 18 - 20mm L= 20m Max 1000V	1
111	140 152	Discharge connection	DN 75 Hose 3" aluminium	1
111	130 890	Discharge connection	DN 75 Thread : ISO G3A Outer aluminium	1
111	50 348 00	Discharge connection	DN 75 Thread : NPT 3-8 Outer aluminium	1
112	50 022 26	Plain washer 10-A4-170HV		2
113	50 022 22	Hexagon nut M10-A4-70		2
114	140 366	O-ring 56.52X5.34 NBR		1
125	51 095 00	Anode unit		1
800	51 731 00	O-ring kit	NBR	1
801	51 095 00	Anode unit		1
900	51 734 00	Basic repair kit	NBR TYPE P SSIC/ SSIC:SSK/SSK	1
900,1	50 287 03	Ball bearing 12X37X12 MM		1
900,2	50 287 04	Ball bearing 20X52X15 MM		1
900,3	51 728 50	Mechanical seal		1
900,4	51 731 00	O-ring kit		1
900,5	51 829 00	Sticker		1



Grindex
Gesällvägen 33
174 07 Sundbyberg
Sweden
Tel: +46-8-606 66 00
Fax: +46-8-745 53 28
www.grindex.com

Visit our Web site for the latest version of this document
and more information

The original instruction is in English. All non-English
instructions are translations of the original instruction.

© 2012 Grindex